

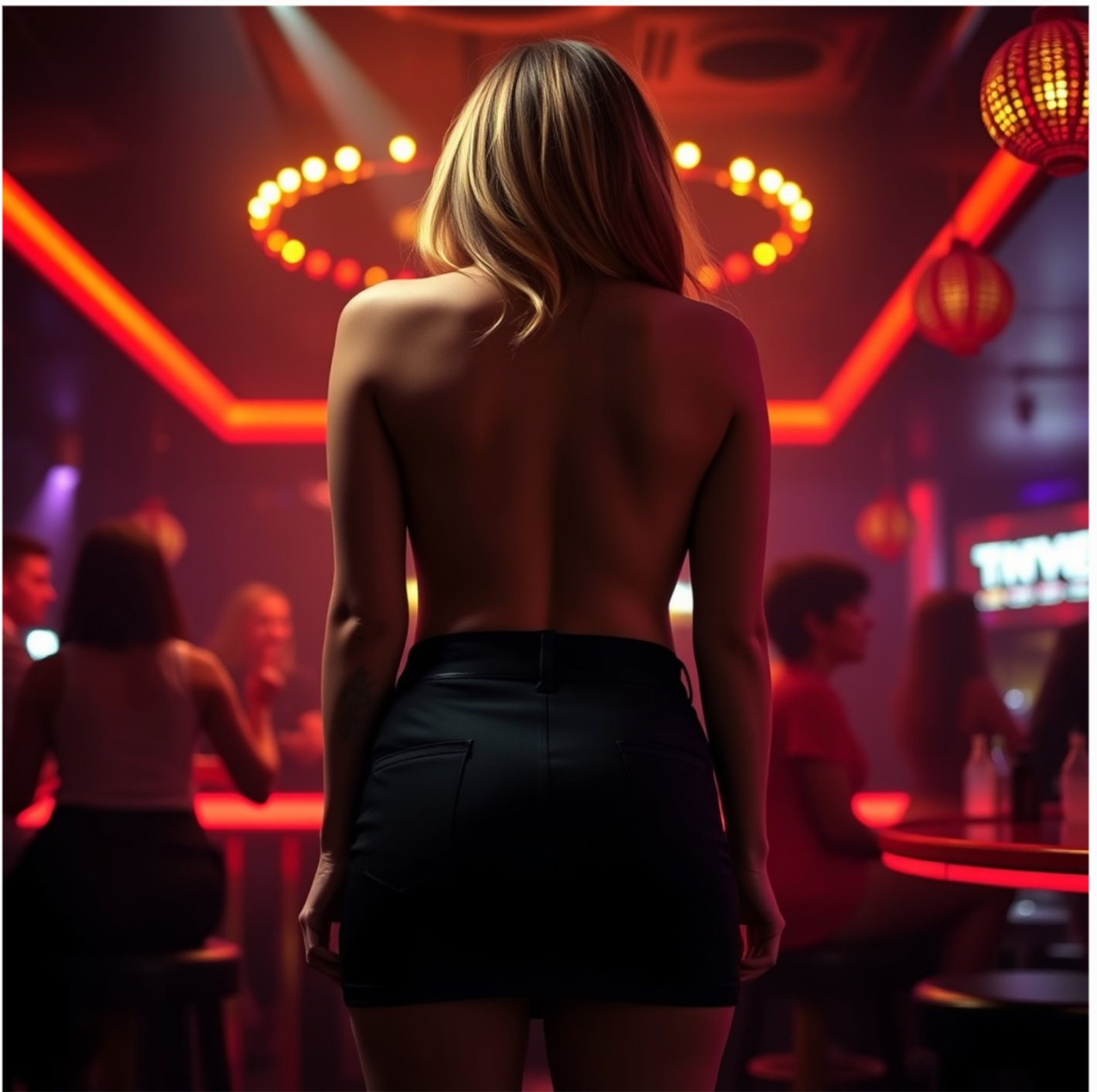
Armadale Castle is one of the most famous historic homes connected to Clan Donald, one of the largest and most powerful clans in Scotland. Located on the beautiful Isle of Skye, the castle stands surrounded by forests, gardens, and stunning views of the sea. Although much of the building is now in ruins, it remains an important symbol of Scottish history and culture.



The castle was built in the late eighteenth century and later expanded into a grand mansion for the MacDonald family. It became the home of the chiefs of Clan Donald, who played an important role in Scottish politics and Highland traditions for many centuries. The clan was known

for its bravery, loyalty, and strong connection to the Highlands and Islands of Scotland.

Armadale Castle is especially important because it helps people understand the lifestyle of powerful Scottish clans during the past. The castle estate now includes a museum called the Museum of the Isles, where visitors can learn about the history of Clan Donald and the traditions of the Highland people. Old photographs, weapons, clothing, and family records are displayed to show how the clan lived over hundreds of years.



Today, many tourists visit Armadale Castle to explore its gardens and enjoy the peaceful scenery. The ruins create a romantic and mysterious atmosphere that attracts photographers and history lovers from around the world. The castle also reminds people of Scotland's rich cultural

heritage and the importance of preserving historic landmarks.

In conclusion, Armadale Castle is more than just an old building. It is a symbol of the strength, history, and traditions of Clan Donald and an important part of Scotland's national story.